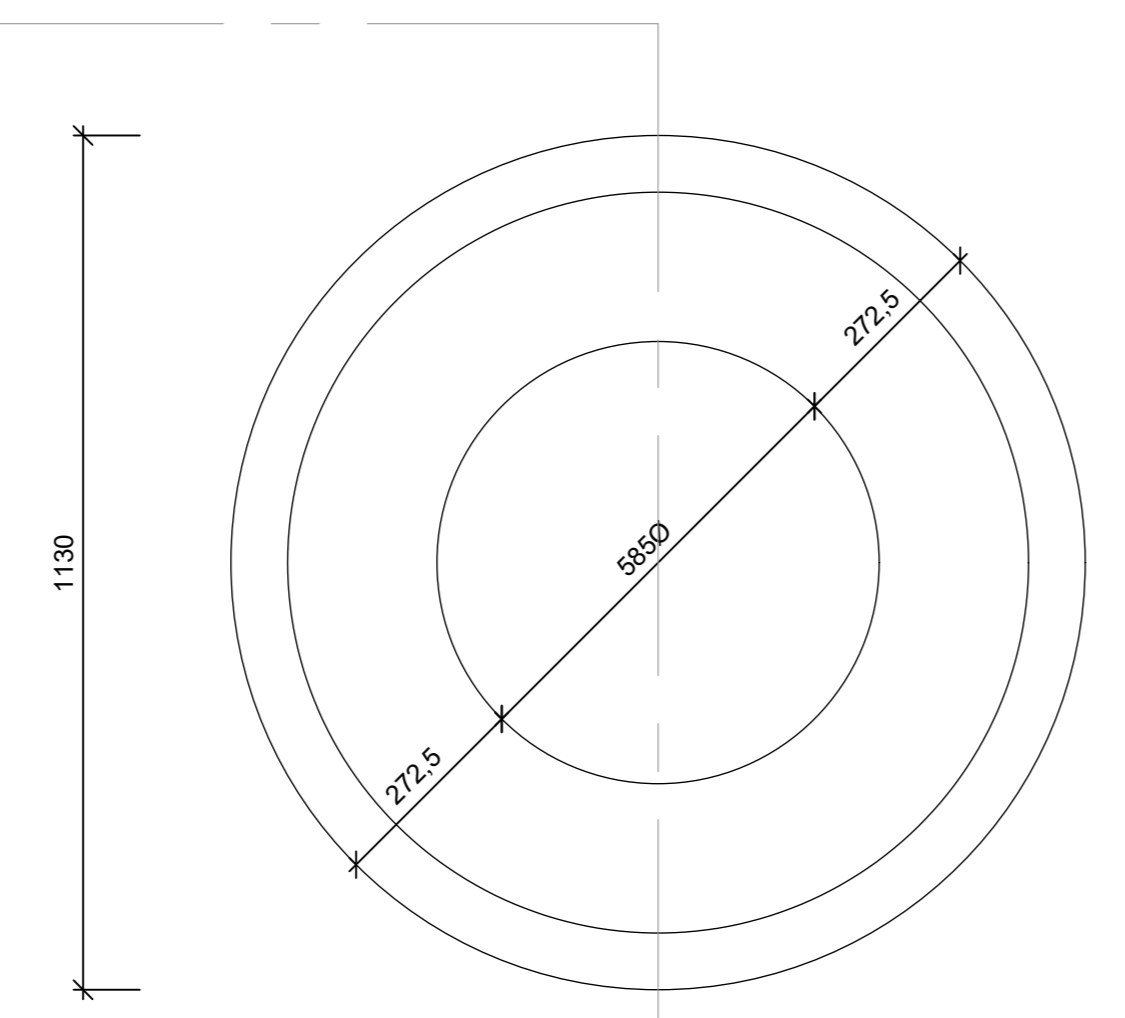
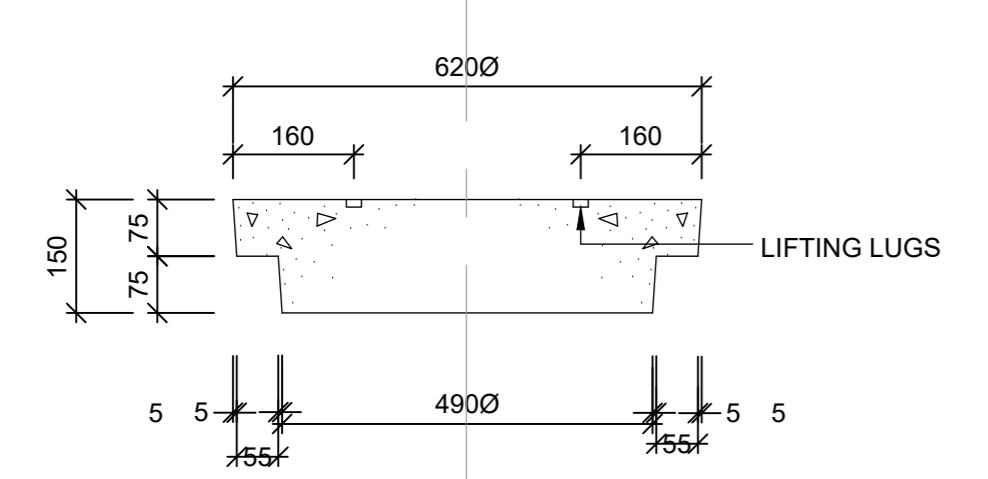


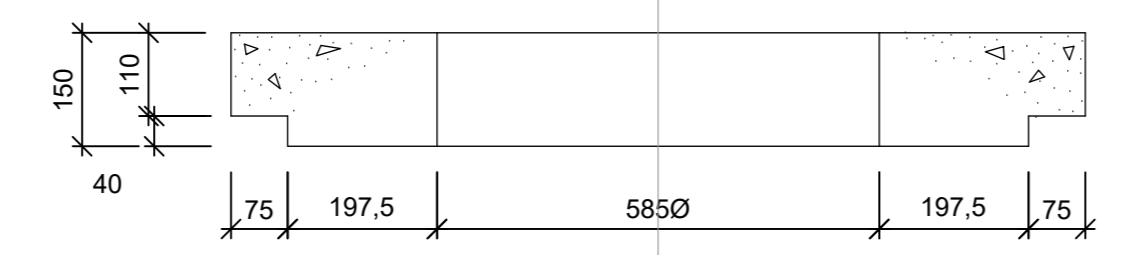
PLAN OF CIRCULAR LIGHT AND HEAVY DUTY FRAME FOR 1000 NOM. DIA. MANHOLE



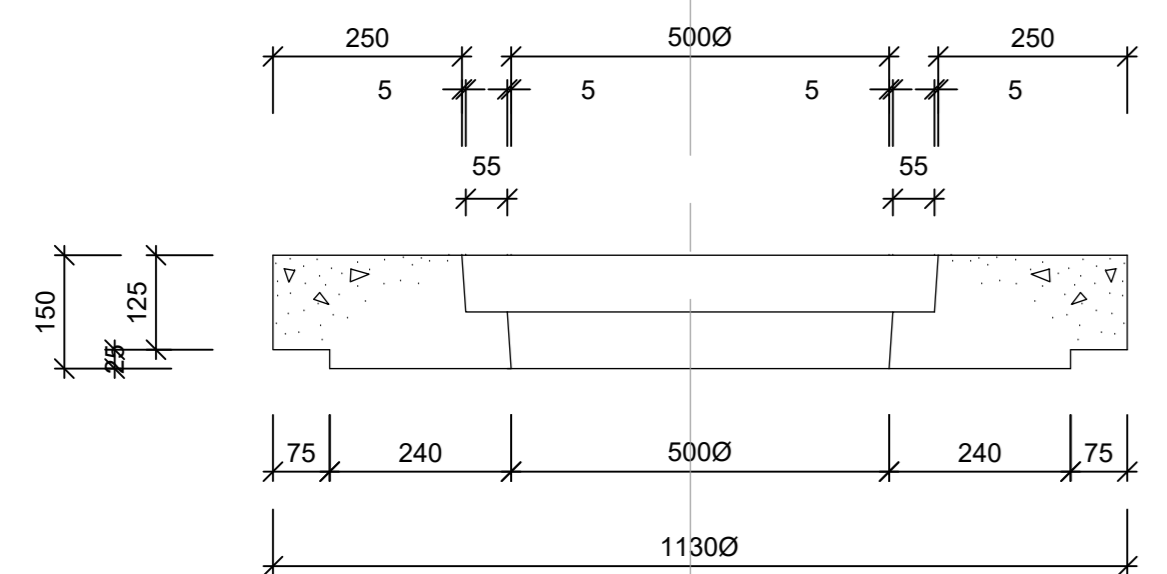
PLAN OF CIRCULAR COVER SLAB



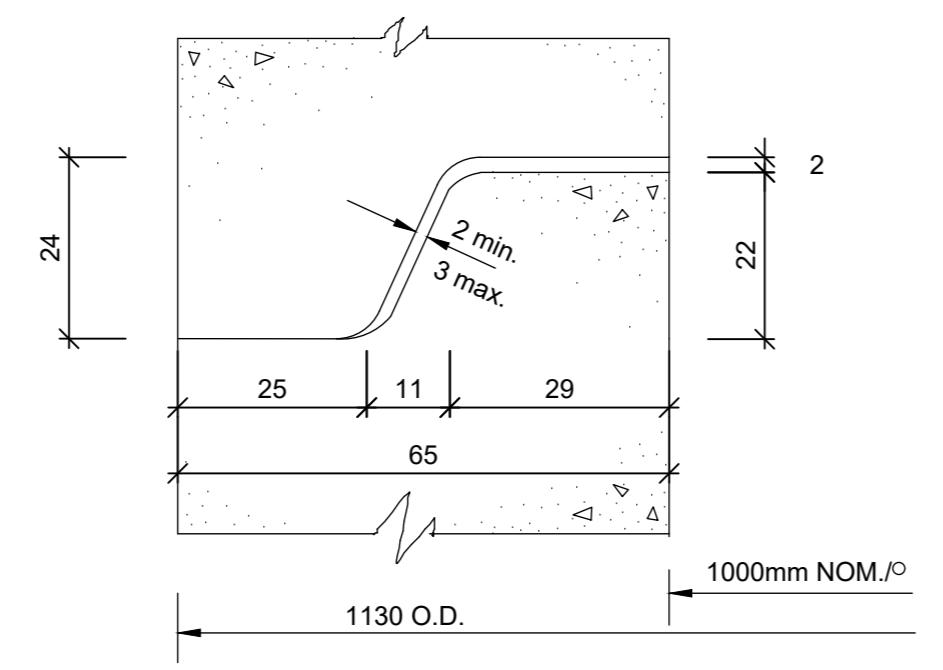
SECTION OF CIRCULAR HEAVY DUTY MH COVER



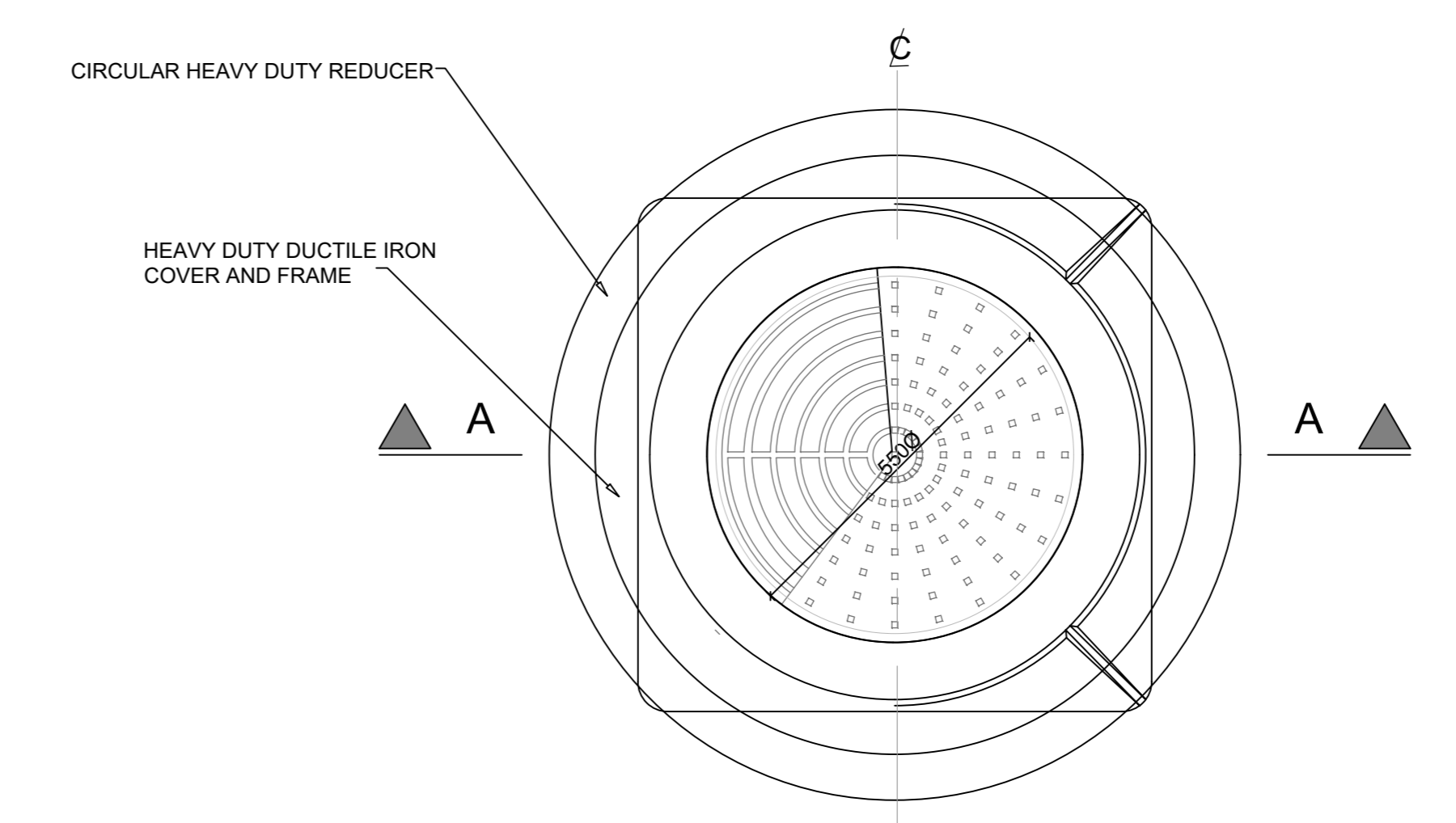
SECTION OF CIRCULAR COVER SLAB



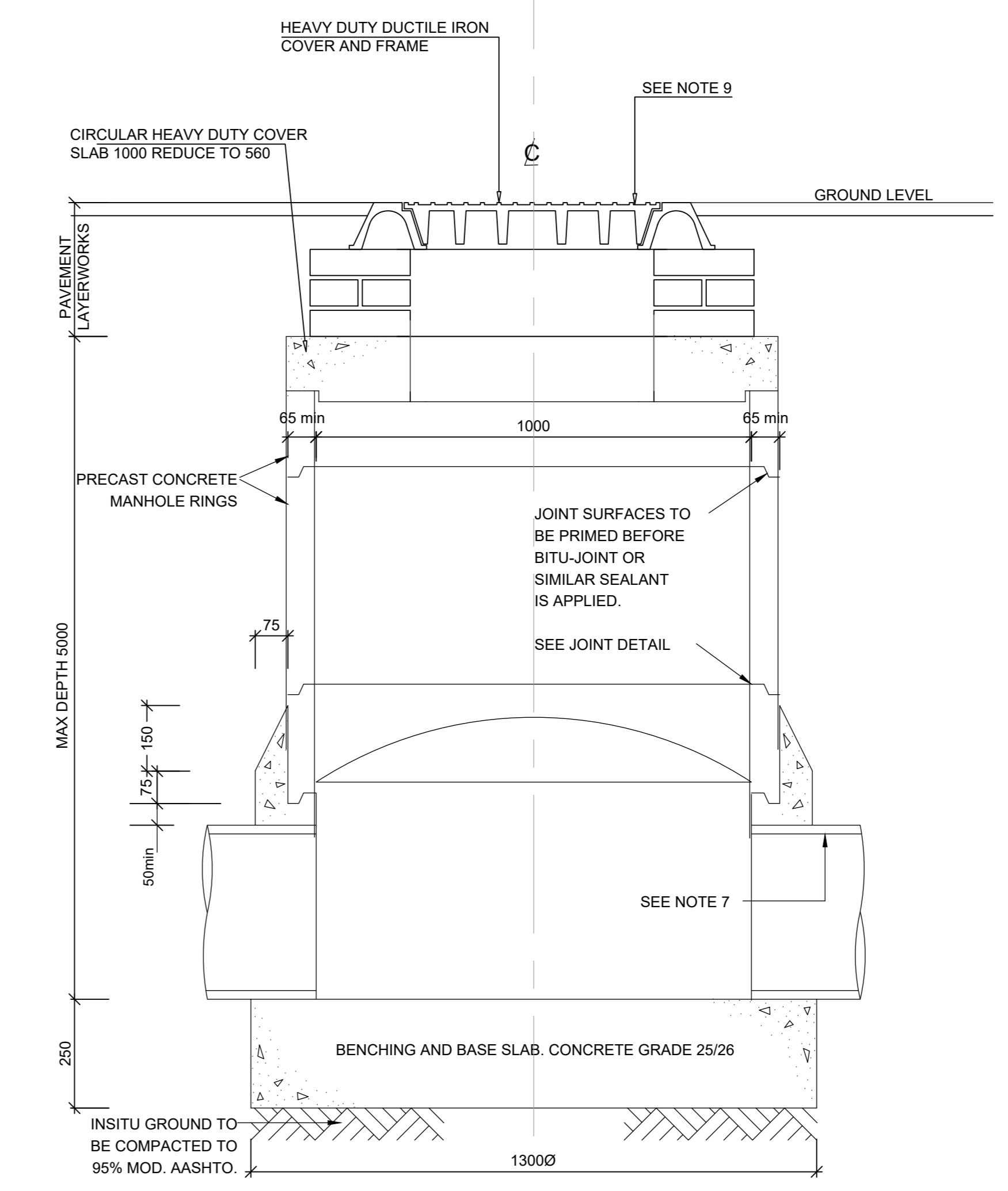
SECTION OF CIRCULAR HEAVY DUTY M.H. FRAME



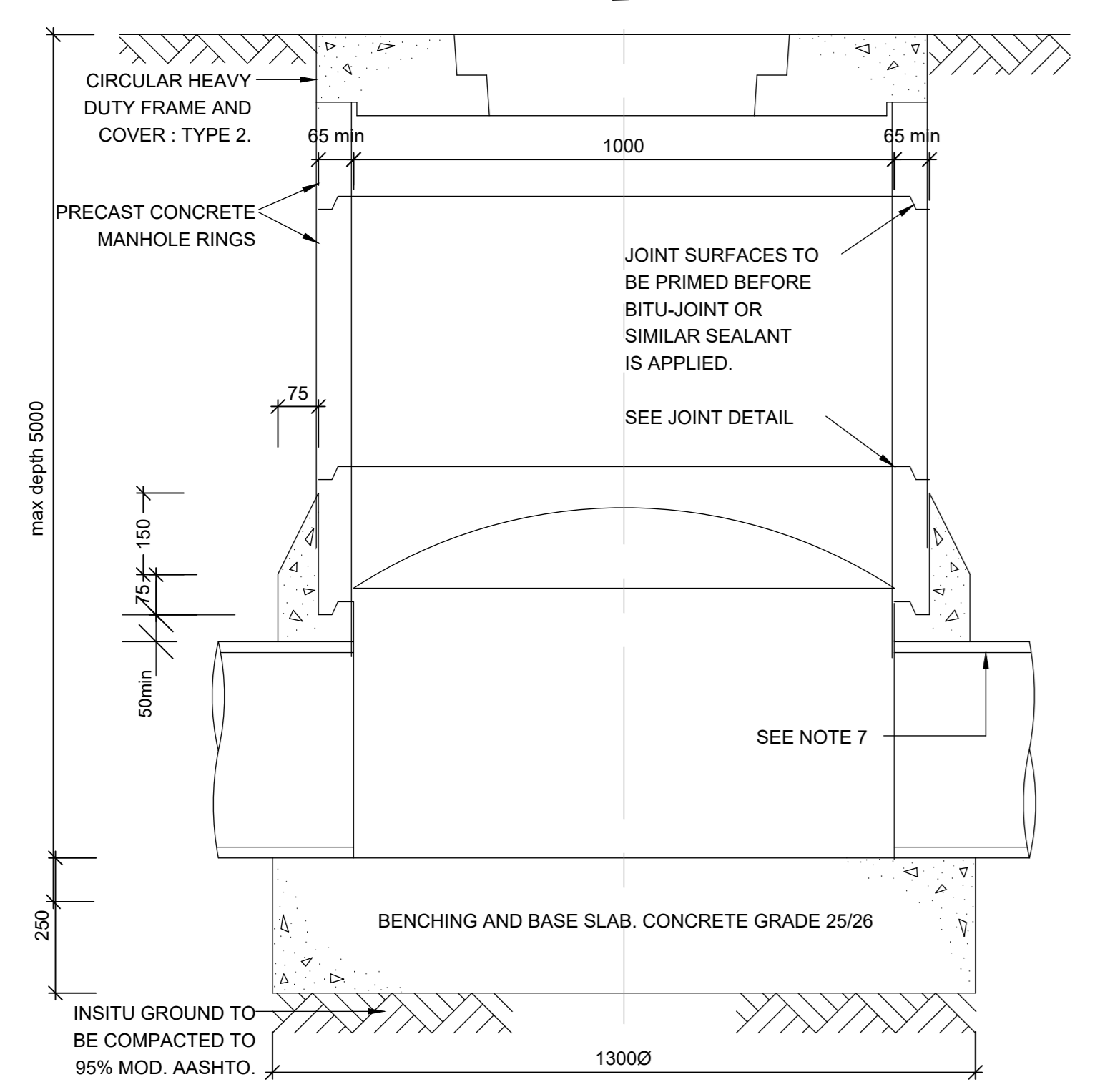
DETAIL OF JOINT



HEAVY DUTY DUCTILE IRON MANHOLE SECTION TRAFFICKED AREAS



TYPE 1 SECTION A-A HEAVY DUTY DUCTILE IRON MANHOLE SECTION TRAFFICKED AREAS



TYPE 3 SECTION OF 1000 DIA. MANHOLE

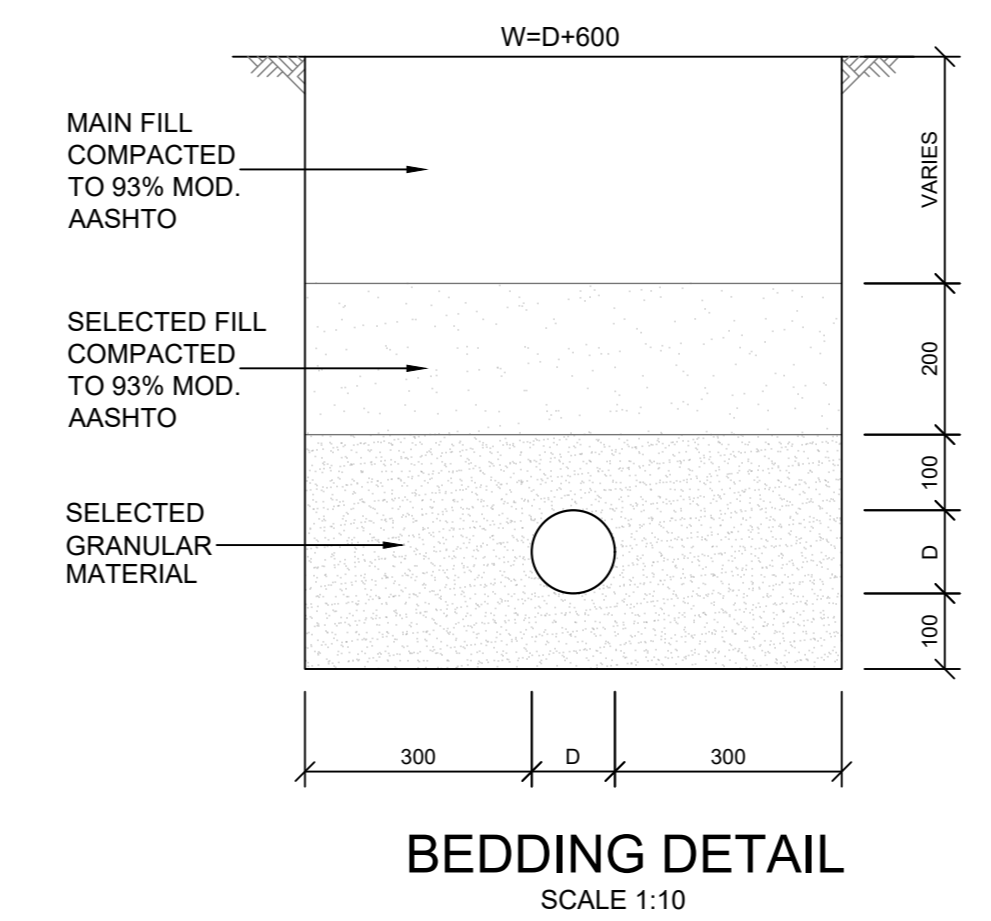
NOTES :

A. GENERAL

1. ALL PRECAST MANHOLE COMPONENTS TO COMPLY WITH THE REQUIREMENTS OF S.A.B.S. 1094 (WHERE APPLICABLE).
2. LENGTHS OF INDIVIDUAL PRECAST WALL UNITS ARE TO VARY IN MULTIPLES OF 250mm.
3. HEAVY DUTY CAST IRON COVERS AND FRAMES TO BE USED ON MANHOLES UNDER VEHICULAR TRAFFIC.
4. FOR DETAILS OF STEEL REINFORCEMENT TO MANHOLE COVERS, COVER SLABS AND FRAMES SEE STANDARD PRECAST DETAILS LISTED ABOVE.

B. SEWER MANHOLE

5. EXISTING SEWER FLOWS TO BE MAINTAINED AT ALL TIMES.
6. RENDERING FOR MANHOLE BENCHING SHALL CONSIST OF 1 PART H.A.C TO 2 PARTS SAND THOROUGHLY MIXED AND APPLIED TO CONCRETE SURFACES WHILE THE LATTER ARE STILL GREEN. RENDERING SHALL BE AT LEAST 20mm THICK.
7. ALL PIPES BUILT INTO MANHOLES SHALL NOT EXCEED 1.0m IN LENGTH, AND THE ADJOINING PIPE SHALL NOT EXCEED 2.0m IN LENGTH.
8. EVERY UP/VC PIPE BUILT INTO A MANHOLE SHALL HAVE CLEAN DRY SAND (TO S.A.B.S. 1083 TABLE 1) GULED TO ITS OUTSIDE AS RECOMMENDED BY PIPE MANUFACTURER USING SPECIAL PVC CEMENT (HENKEL SA PTY L.T.D TANGIT OR SIMILAR) TO ENSURE GOOD ADHESION TO BASE CONCRETE.
9. IN LOCATIONS DEFINED BY THE ENGINEER AS SUBJECT TO FLOODING, CAST IRON MANHOLE COVERS AND JOINTS SEALED WITH BOSTIC BUTYL TAPE OR SIMILAR, SHALL BE USED. OR LOCATIONS EXPOSED TO VEHICLE TRAFFIC.



BEDDING DETAIL

NOTES:

- All work to comply with the national building regulations sans 10400 & sans 1200.
- Figured dimensions to be taken in preference to scaled dimensions. all dimensions and levels must be confirmed on site by contractor prior to the commencement of any work.
- This drawing is subject to copyright via the copyright act no. 98 of 1978. This drawing may not be distributed or copied without written permission of the author.

Rev	Amendment	App.	Date
A	ISSUED FOR INFORMATION	JS	2019/09/20

Delca Systems
 Development • Engineering • Logistics • Consulting Africa
 18 Westville Road, Westville 3630
 P.O. Box 37064, Overport, 4067
 Tel: +27 31 266 5900
 Fax: +27 31 266 5926
 Email: info@delca.co.za

Client

Project

Mandeni Youth Enterprise Park

Description

SEWER TYPICAL DETAILS

Approved	Designed by	SM
	Drawn by	JS
	Checked by	SM

Scale	AS SHOWN	Page	A0	Job No.	3873	Dwg No.	200	Rev	A
Date	2019/09/20	Sheet:							

ISSUED FOR INFORMATION