



enterprise ilembe
ECONOMIC DEVELOPMENT AGENCY



WORKING WITH
**BUSINESS,
COMMUNITIES &
GOVERNMENT**
TO DRIVE ECONOMIC
GROWTH IN **ILEMBE
DISTRICT**



Location

The iLembe District Municipality, located approximately 65km north of Durban, boasts a wealth of rich historical and cultural heritage. Situated on the east coast of South Africa, in the KwaZulu-Natal Province, it is one of the 11 district municipalities of the province and is the smallest in terms of land area, the district is divided into four local municipalities. These four municipalities are:

- *KwaDukuza Local Municipality*
- *Mandeni Local Municipality*
- *Maphumulo Local Municipality*
- *Ndwedwe Local Municipality*

The map depicting the locality of the iLembe District and its constituent municipalities is presented below. iLembe is situated between two ports Durban to the South and Richards-bay to the North. It is also in close proximity to the Dube Tradeport. and Kingshaka International Airport. Consequently, it is strategically positioned for both local and international markets.



Demographics

Population: **782 661**

Average Growth Rate (2011-2022): **2.5%**



23.1%

Mandeni

18 0939

14.2%

Maphumulo

11 0983

41.5%

KwaDukuza

32 4912

21.1%

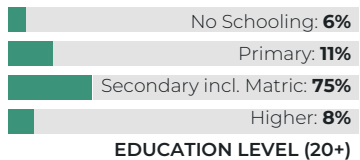
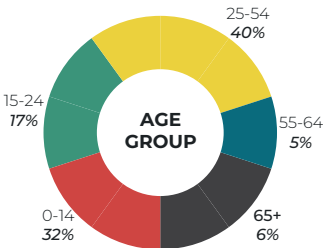
Ndwedwe

16 5826



Source: Census/Statistics South Africa

Age Group & Education



Source: Census/Statistics South Africa

Key Economic Drivers

Manufacturing
23.9%



**Agriculture
Forestry & Fishing**
17.7%



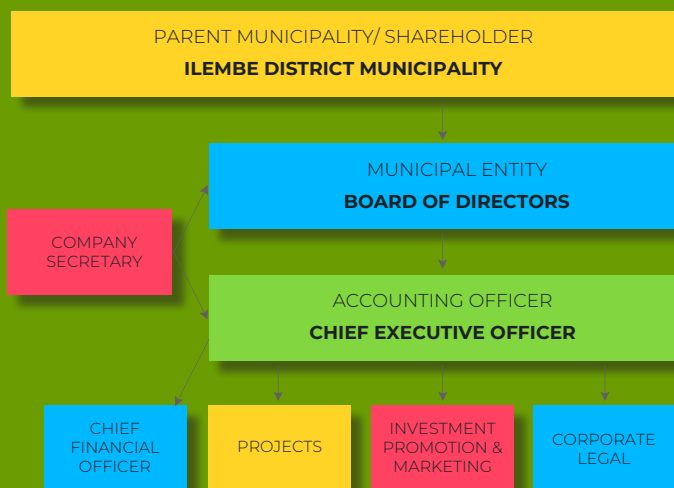
**Commerce
& Services**
58.4%



Source: IHS Global Insight

02 Introducing Enterprise iLembe

iLembe Management Development Enterprise (Pty) Ltd, operating under the trade name “Enterprise iLembe,” is a municipal entity entirely owned by the iLembe District Municipality (IDM). Established as a local economic development agency of the iLembe District Municipality, Enterprise iLembe’s primary objective is to foster economic growth within the iLembe District. It operates in accordance with the provisions outlined in the Municipal Systems Act No. 32 of 2000 and the Municipal Finance Management Act No. 56 of 2003 (MFMA). Additionally, it is mandated to adhere to the regulations specified in the Companies Act 71 of 2008.



Vision

To be leading economic development agency that enables the iLembe District to be a destination of choice for investment, business and tourism.

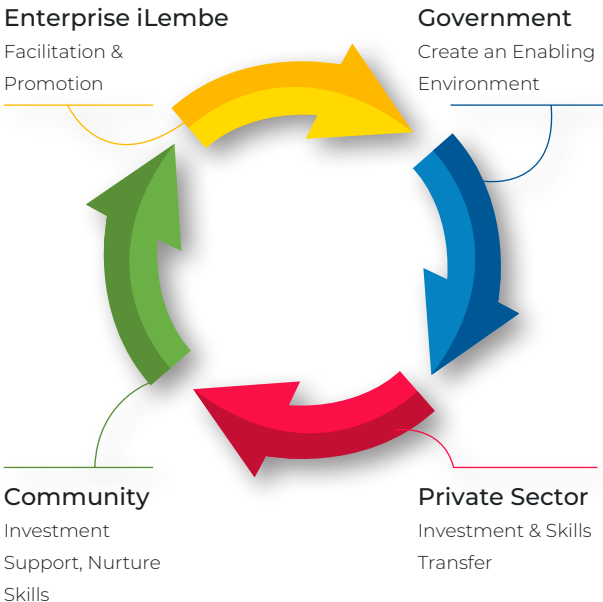
Mission

Working with business, communities and government to drive economic development in the iLembe District to ensure inclusive economic growth and job creation.

Mandate and Functions

- Develop, review, and enhance the local economic development strategy for the district and its family of municipalities.
- Advocate for a diverse array of activities identified in the Integrated Development Plans (IDPs) and LED Strategies of the municipalities.
- Coordinate LED activities to ensure alignment and integration across the district.
- Promote district-wide marketing initiatives for tourism and investment.
- Facilitate the identification, packaging, and implementation of catalytic projects across the four key sectors and emerging industries.
- Provide professional and multi-skilled support and networking services to major investors interested in the region.
- Collaborate with local government to establish a business-friendly environment.
- Implement business retention and expansion (BR&E) programs in collaboration with the local business sector.
- Cultivate twinning relationships with developed regions both nationally and internationally, and manage social risks within the district.

Roles and Responsibilities



Strategic Goals

The key strategic goals and objectives can be summarized as follows:



Facilitate the packaging and implementation of projects in both existing and new sectors.



Facilitate research to assist in policy development and formulation that impacts the mandate of the agency.



Market & promote the iLembe District as an investment, tourism and business destination.



Research other potential growth sectors alongside the current four primary focus sectors.



Identify, build, and coordinate partnerships among socio-economic stakeholders.



Influence policy and the regulatory environment for socio-economic development and investment.

Public and private partners are encouraged to engage in the development of the iLembe District. The philosophy underlying Enterprise iLembe is rooted in fostering a participatory approach, wherein individuals from diverse sectors collaborate to invigorate local commercial endeavors, thereby cultivating a resilient and sustainable economy. This approach serves as a mechanism to generate sustainable employment opportunities and enhance the overall quality of life for all residents, particularly those who are economically disadvantaged and marginalized.

Our Values

Integrity and Ethics

We pledge to uphold integrity and ethics by consistently doing what is right, demonstrating honesty, fairness, and equity. We embrace accountability, humility, professionalism, and determination in all our endeavors.

Respect

We are committed to working collaboratively with dedication to foster organizational growth and sustainability. We respect individual human rights, privacy, and strive to eliminate all forms of discrimination. Additionally, we ensure a safe and healthy working environment for everyone.

Innovation

We are dedicated to staying innovative and continuously improving the quality of services provided to our customers. Through creativity, education, and celebrating success, we strive to exceed expectations and drive positive change.

Trustworthiness

We aim to be a trusted entity in the marketplace, known for our integrity and ethical standards. By setting a high standard for honesty and fairness, we inspire others to uphold similar values and principles.

03 Our Priorities

Enterprise iLembe plays a critical role in coordinating, facilitating, and implementing projects and programmes in the following key sectors:



- Support for local farmers transitioning from subsistence to small scale
- Commercial farming
- Mechanizations
- Provision of inputs
- Market access facilitation
- Access to finance



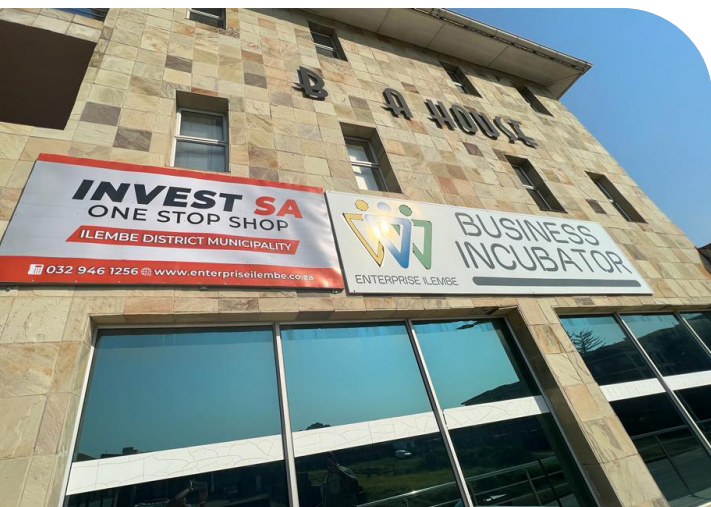
- Destination marketing and promotion
- Investment promotion and facilitation
- Assistance to local municipalities in product development
- Facilitation of access to finance
- Conducting tourism industry research



- Investment promotion and facilitation
- Business retention and expansion support
- Facilitation of infrastructure financing
- Land packaging
- Value chain development
- Market access



- Investment promotion and facilitation
- Assistance with regulatory approvals (SPLUMA, EIA, WULA)
- Infrastructure financing support
- Cost of development benchmarking and reform



The iLembe Business Incubator, situated in KwaDukuza, serves as a conduit and access platform for technical and business-related skills essential for the business growth process and ease of operation for SMMEs or cooperatives. It also aids in accessing funding by guiding incubates in developing credible and bankable business plans. The business incubator provides the following support services to small businesses:

A secure, professional and work-friendly office space with private cubicles:

- Computers with ADSL internet access
- Telephone, fax, and email facilities
- Meeting and boardroom facilities

Business support services:

- Comprehensive business tools and templates
- Business management training services
- Mentoring support
- Professional accounting services, including validation by an Accounting Officer and sign-off of AFS at a minimal fee
- Assistance with statutory and taxation compliance requirements
- Access to information, including updates on available tenders and business opportunities
- Assistance with maintenance and management of Central Supplier Database (CSD) and other procurement portals



Coupled with the iLembe Business Incubator, the recently launched One-Stop-Shop is aimed at providing investors and local businesses with services to expedite projects and serves as an enabler for reducing bureaucratic obstacles.


Government departments and entities offering business support services available through the One-Stop-Shop include:


- **Department of Trade, Industry, and Competition (DTIC) - Investor and Trader Support**
- **CPIC - Company Registration**
- **EDTEA - Environmental Impact Assessment (EIA) Applications**
- **The Export Agency - Import and Export Permit Applications**
- **VFS on behalf of the Department of Home Affairs for Corporate Business Visa Applications**
- **SARS and the Department of Labour - Business Services on Selected Days**

The One-Stop-Shop also facilitates businesses with linkages and access to applications to the DTIC, as well as other government departments and development agencies. Its streamlined administrative procedures for issuing business approvals, permits, and licenses help alleviate bottlenecks that investors may encounter in establishing and running businesses.

Contact Us:

Enterprise iLembe

 Cnr Link Road & Ballito Drive, Ballito,
KwaZulu Natal, South Africa, 4420
PO Box 539 Ballito 4420

 +27 32 946 1256


 info@enterpriseilembe.co.za

 www.enterpriseilembe.co.za

**Follow us on our
socials:**

 Enterprise iLembe

**Business Incubator &
One-Stop-Shop:**

 Suite 3&4 BMA House
142 King Shaka Street
KwaDukuza
4450

 +27 71 855 0673

 info@eibusinessincubator.co.za

