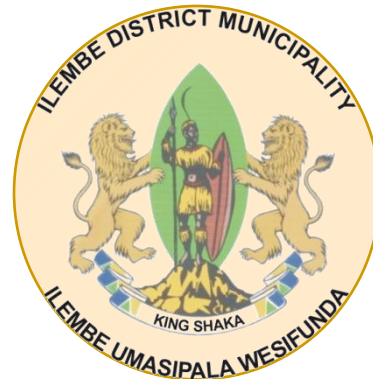


# **ILEMBE INVESTMENT SUMMIT**

**ILEMBE REGIONAL PLANNING PERSPECTIVE  
CHALLENGES AND OPPORTUNITY  
31 MARCH 2011**



# CONTENTS

- Development Planning
- Challenges
  - ★ Water
  - ★ Sanitation
  - ★ Roads
  - ★ Housing
  - ★ Electricity
- Development Opportunities

# PROVINCIAL SPATIAL ECONOMIC DEVELOPMENT STRATEGY

## New Activity Corridors

There is a need for investment in several roads in order to support new activity corridors. Such investment can act as a catalyst to developing activities along these corridors.

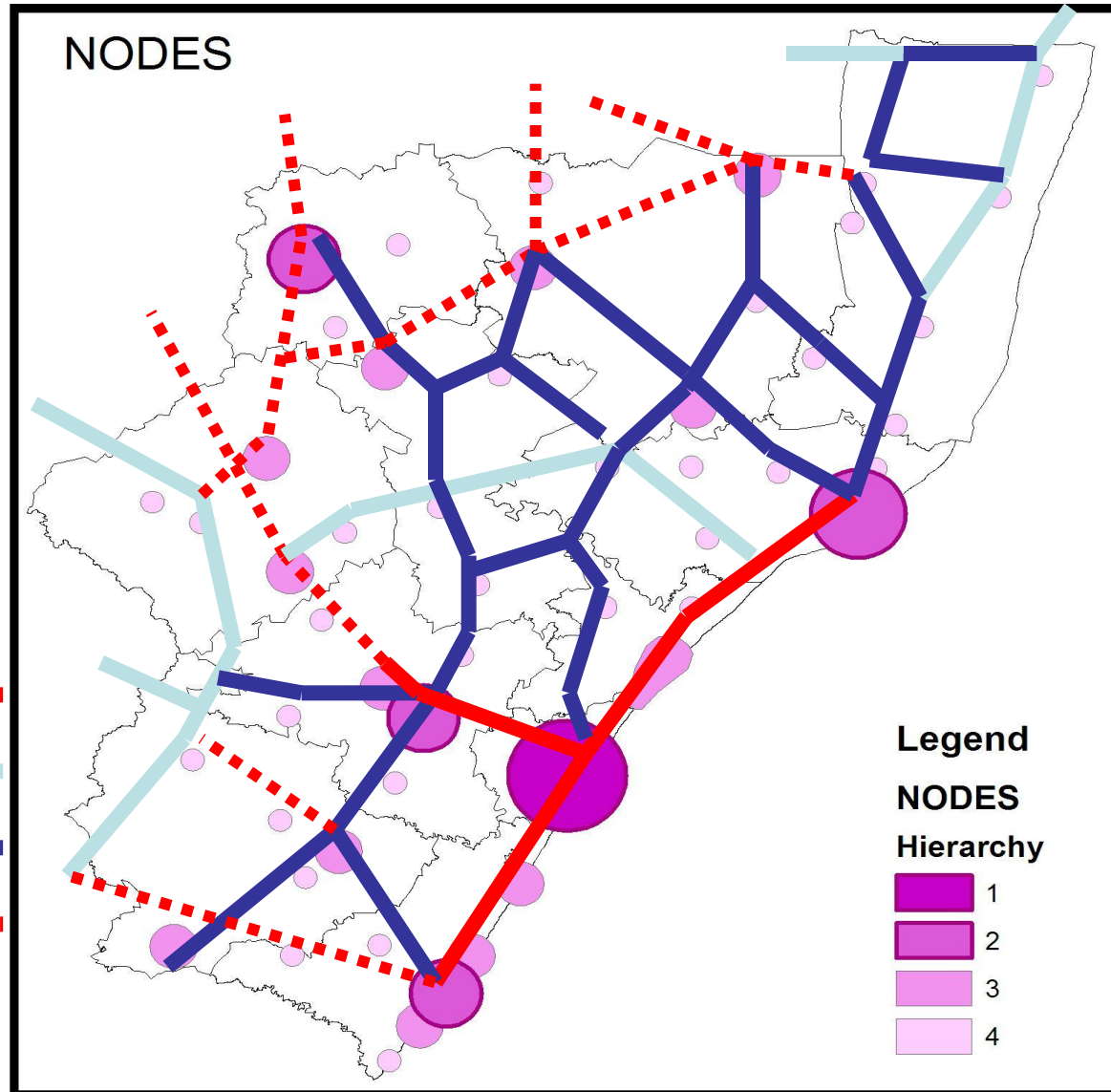
## Primary Purpose of Activity Corridor

Multi-Sectoral Activity Corridor

Tourism Activity Corridor

Agriculture Activity Corridor

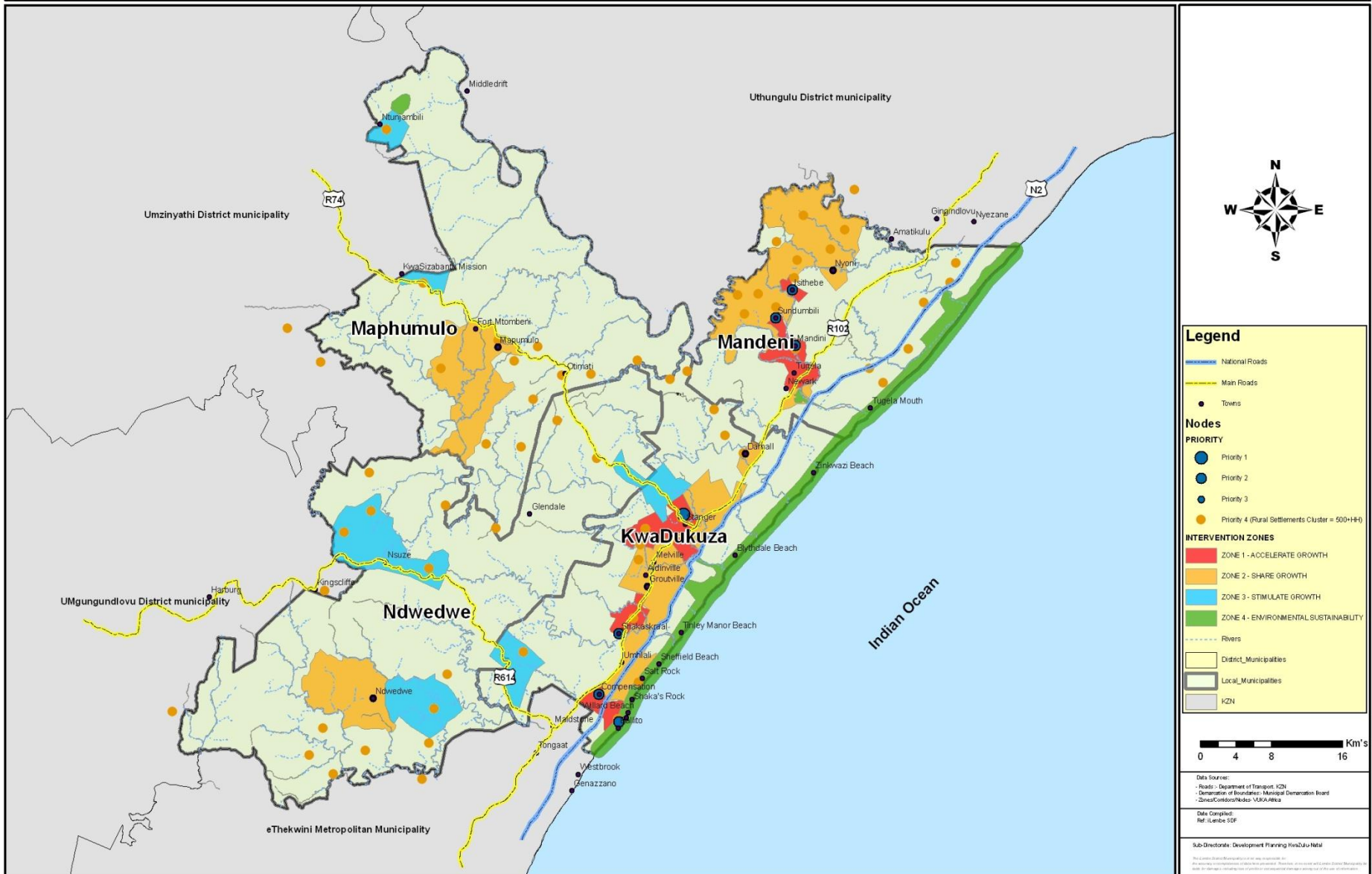
Existing Activity Corridor



# OVERVIEW OF ILEMBE DISTRICT

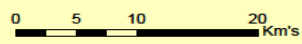
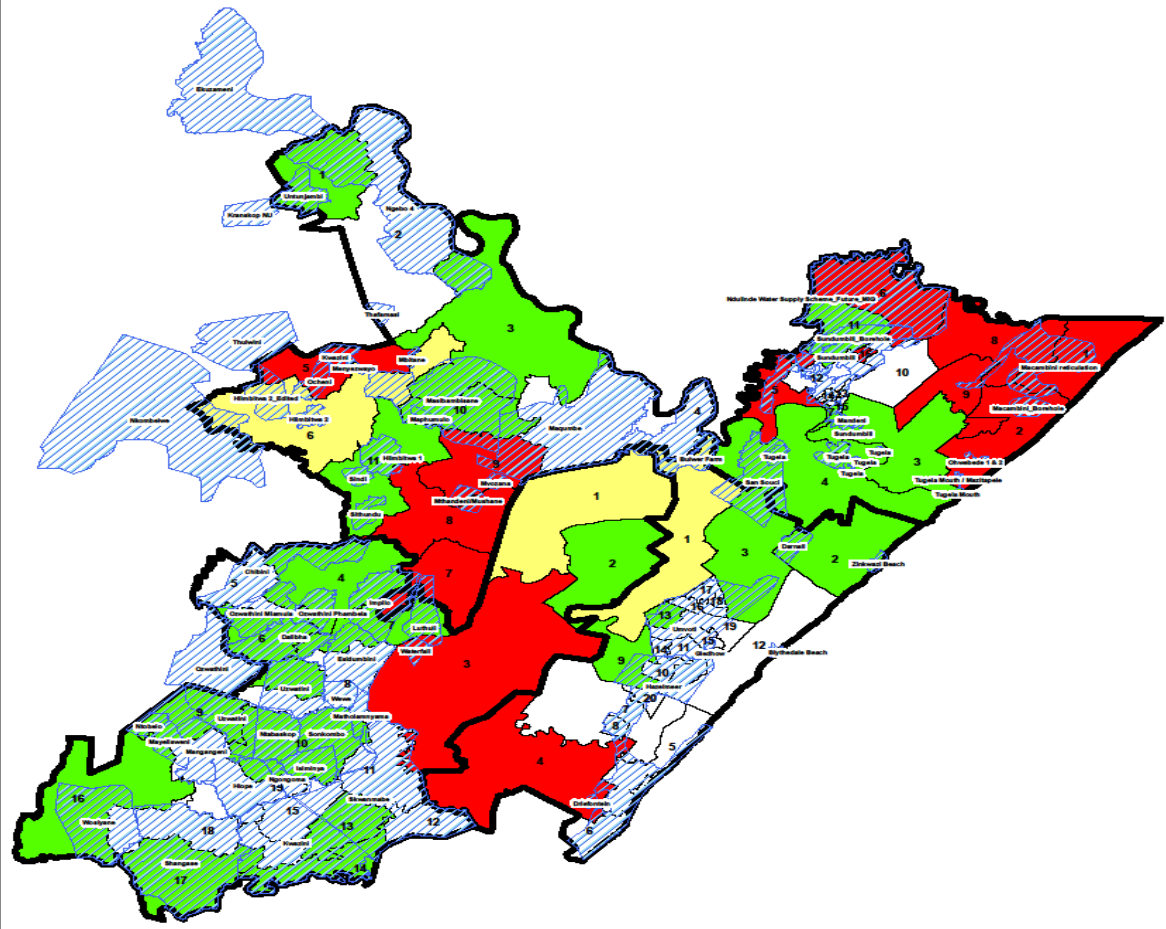


## iLembe Spatial Development Framework Review

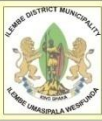




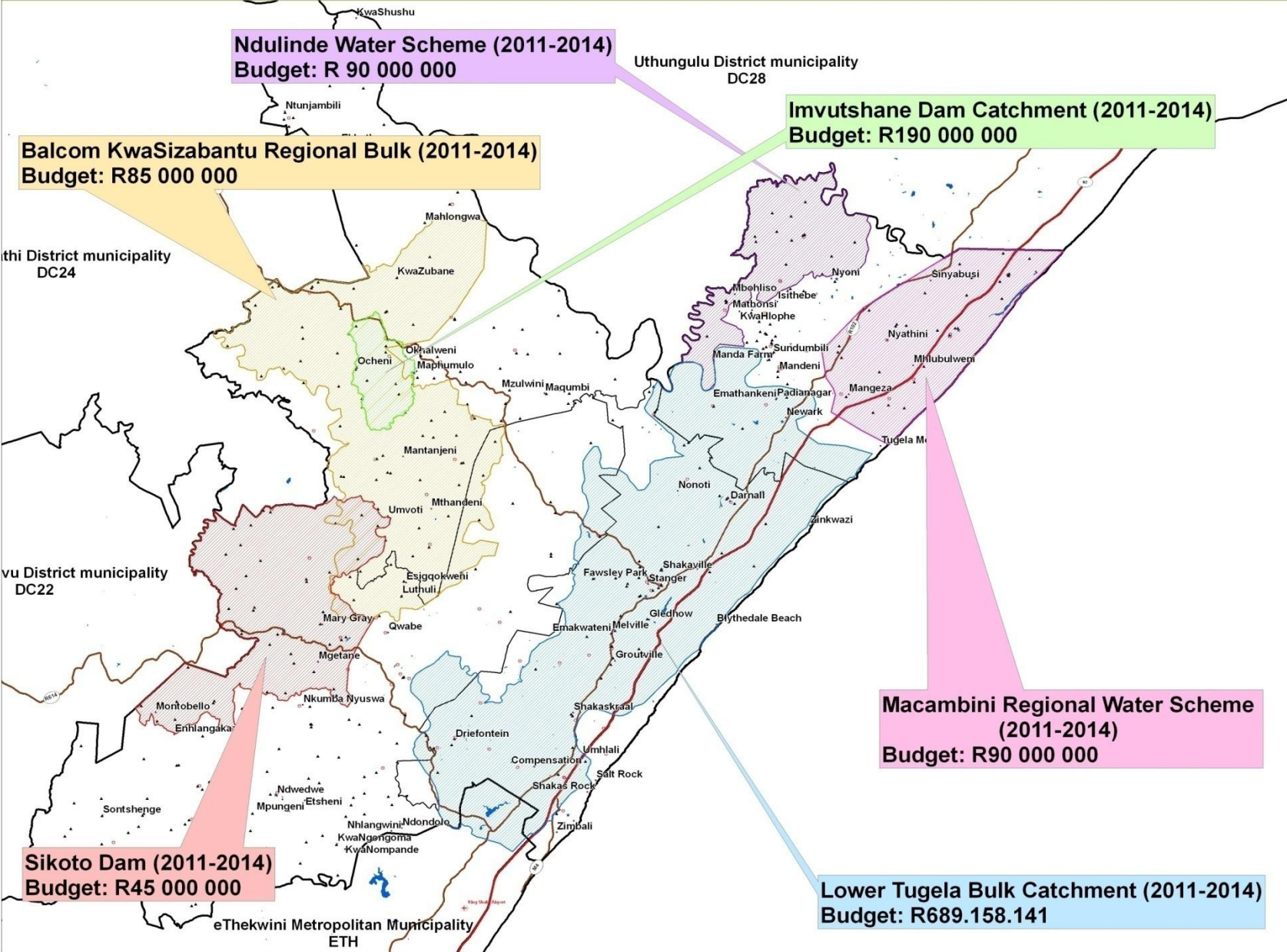
# Ilembe Water Schemes and Backlogs



Legend			
Water Schemes	0% Water Backlog	51-70% Water Backlog	
Local Municipalities Boundaries	1-50% Water Backlog	71-100% Water Backlog	
Ilembe Wards			



# iLembe Proposed Water Schemes



**Legend**

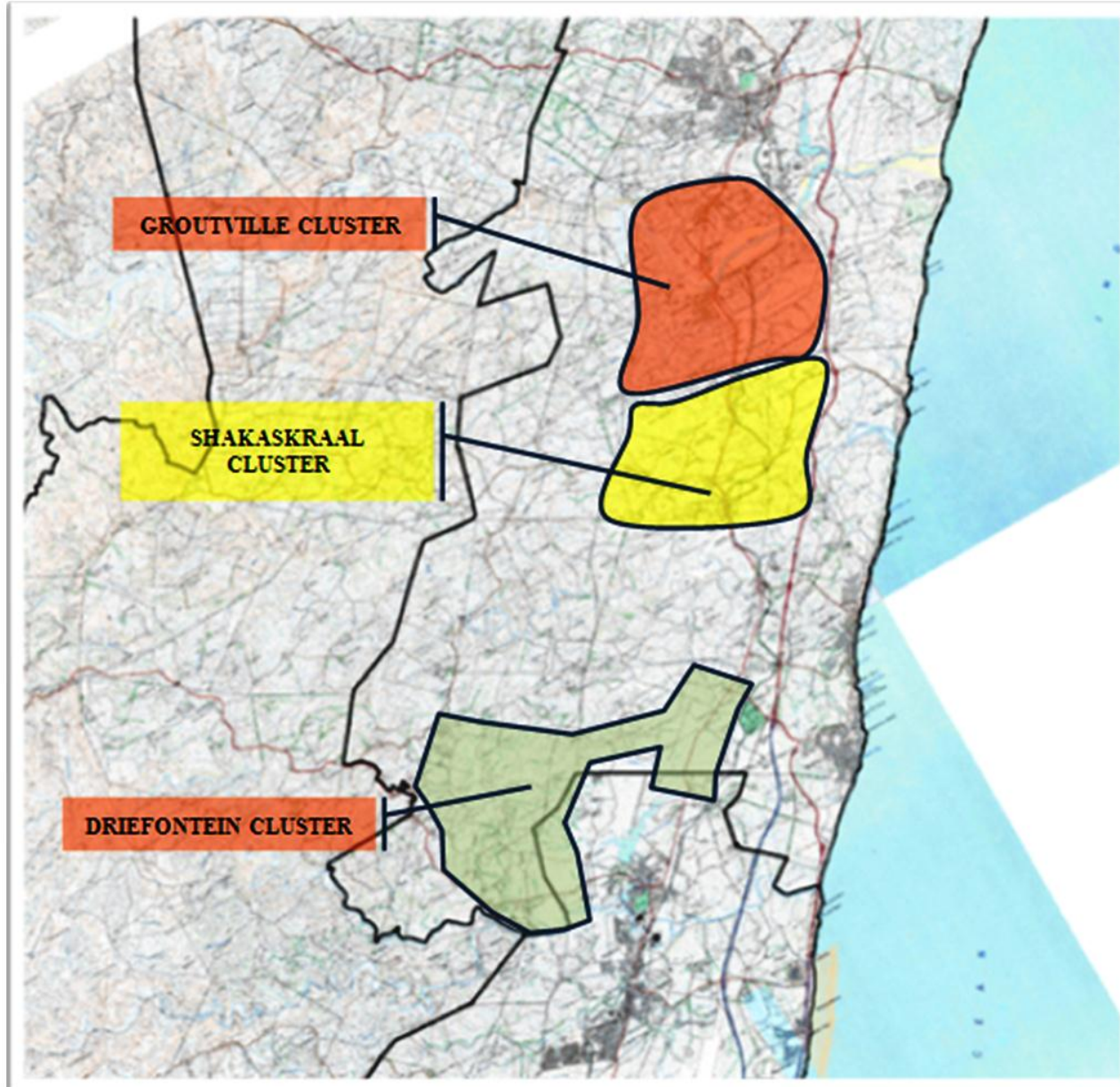
- Placenames
- ▲ Educational Facilities
- ★ Police Stations
- Health Facilities
- ✈ Airports
- National Roads
- Main Roads
- Dams
- District Municipalities
- Local Municipalities
- Imvutshane Dam Catchment (2011-2014)
- Sikoto Dam (2011-2014)
- Balcom KwaSizabantu Regional Bulk (2011-2014)
- Lower Tugela Bulk Catchment (2011-2014)
- Ndulinde Water Scheme (2011-2014)
- Macambini Regional Water Scheme (2011-2014)

**Data Sources:**  
 Roads - Department of Transport 1:250  
 Demarcation of Boundaries - Municipal Demarcation Board  
 Water Schemes - Department of Water Affairs

Date Compiled: 21/02/2011  
 Ref:A3  
 Sub-Directorate: Development Planning KwaZulu-Natal  
 The iLembe District Municipality is in no way responsible for the accuracy or completeness of data here presented. Therefore, in no event will iLembe District Municipality be liable for damages, including those of profits or consequential damages arising out of the use of information.



# iLembe District Municipality (DC29)



# IMPLICATIONS FOR INFRASTRUCTURE PLANNING

Housing Projects	No of Units	No of Indigent Beneficiaries	Anticipated Investment
2011-2020			➤ Low-cost housing R2.9 billion
Driefontein	15000	3000	
Groutville	21945	16945	➤ Affordable housing R6.4 billion
Shakakraal	9168	2600	
Bulk Infrastructure Needed			R 2.6 billion
➤ bulk water			
➤ sanitation			
➤ roads			
➤ electricity			

# KEY PLANNED DEVELOPMENTS IN ILEMBE

<b>PROJECT</b>	<b>NATURE</b>	<b>INVESTMENT</b>
Blythedale Coastal Resort	Tourist Resort & Housing	R2.5 billion
Nonoti Resort	Tourist Resort & Housing	R400 million
Peaking Power Plant	Power generation Plant	R2 billion
Thukela Lifestyle Resort	Medical Tourism & Housing	R1.3 billion
Various Affordable Housing Estates	Affordable housing estates	R700 million
Compensation Industrial Node	Industrial & Commercial complex	R1 billion
	<b>TOTAL</b>	<b>R7.4 Billion</b>
Macambini Resort	Mixed resort & residential & commercial development	R 1.5+?



THANK YOU/ SIYABONGA